



The report shall not be reproduced without written approval from Intertek  
Attention is drawn to the Terms and Conditions for Inspection printed overleaf.

**TEST REPORT**

NUMBER: BKKH09033928S1

APPLICANT: PT. INDAH KIAT PULP & PAPER TBK  
JL. RAYA SERANG KM.76, DESA KRAGILAN/  
SENTUL, KEC KRAGILAN SERANG 42184  
ATTN: RUDI HERYADI SUKARSA

DATE: FEB 16, 2010  
**THIS REPORT SUPERSEDES  
THE PREVIOUS REPORT  
DATE DEC 11, 2009**

**SAMPLE DESCRIPTION:**

ONE (1) BAG OF SUBMITTED SAMPLE SAID TO BE **SAVVICOAT (C1S)**

ITEM NAME: **SAVVICOAT (C1S)**  
DATE SAMPLE RECEIVED: DECEMBER 09, 2009  
TESTING PERIOD: DECEMBER 09, 2009 TO DECEMBER 11, 2009



BKKH09033928S1

\*\*\*\*\*

**TEST CONDUCTED:**

AS REQUESTED BY THE APPLICANT, FOR DETAILS PLEASE REFER TO ATTACHED PAGE(S)  
TYPE OF TEST: ROHS WET CHEMICAL ANALYSIS

\*\*\*\*\*

AUTHORIZED BY :  
FOR INTERTEK TESTING SERVICES (THAILAND)

-----  
PHANIT HITAPONG  
DIVISION MANAGER  
TOYS & HARDLINES DIVISION



The report shall not be reproduced without written approval from Intertek  
Attention is drawn to the Terms and Conditions for Inspection printed overleaf.

**TEST REPORT**

NUMBER : BKKH09033928S1

TEST CONDUCTED :

(A) TEST RESULT SUMMARY:

TESTING ITEM	RESULT (mg/kg)
	SUBMITTED SAMPLES
CADMIUM (Cd) CONTENT	ND
LEAD (Pb) CONTENT	ND
MERCURY (Hg) CONTENT	ND
CHROMIUM VI (Cr <sup>6+</sup> ) CONTENT	ND
POLYBROMINATED BIPHENYLS (PBB)	
MONOBROMOBIPHENYL (MonoBB)	ND
DIBROMOBIPHENYL (DiBB)	ND
TRIBROMOBIPHENYL (TriBB)	ND
TETRABROMOBIPHENYL (TetraBB)	ND
PENTABROMOBIPHENYL (PentaBB)	ND
HEXABROMOBIPHENYL (HexaBB)	ND
HEPTABROMOBIPHENYL (HeptaBB)	ND
OCTABROMOBIPHENYL (OctaBB)	ND
NONABROMOBIPHENYL (NonaBB)	ND
DECABROMOBIPHENYL (DecaBB)	ND
POLYBROMINATED DIPHENYL ETHERS (PBDE)	
MONOBROMODIPHENYL ETHER (MonoBDE)	ND
DIBROMODIPHENYL ETHER (DiBDE)	ND
TRIBROMODIPHENYL ETHER (TriBDE)	ND
TETRABROMODIPHENYL ETHER (TetraBDE)	ND
PENTABROMODIPHENYL ETHER (PentaBDE)	ND
HEXABROMODIPHENYL ETHER (HexaBDE)	ND
HEPTABROMODIPHENYL ETHER (HeptaBDE)	ND
OCTABROMODIPHENYL ETHER (OctaBDE)	ND
NONABROMODIPHENYL ETHER (NonaBDE)	ND
DECABROMODIPHENYL ETHER (DecaBDE)	ND

NAME OF OPERATION: KRITSANA T.

mg/kg = MILLIGRAM PER KILOGRAM BASED ON WEIGHT OF SAMPLE = ppm

ND = NOT DETECTED

TESTED COMPONENT: WHITE PAPER (SAVVICOAT (C1S))

\*\*\*\*\*



The report shall not be reproduced without written approval from Intertek  
Attention is drawn to the Terms and Conditions for Inspection printed overleaf.

**TEST REPORT**

NUMBER : BKKH09033928S1

TEST CONDUCTED :

(B) RoHS REQUIREMENT:

<b>RESTRICTED SUBSTANCES</b>	<b>LIMITS</b>
CADMIUM (Cd)	0.01% (100 mg/kg)
LEAD (Pb)	0.1% (1000 mg/kg)
MERCURY (Hg)	0.1% (1000 mg/kg)
CHROMIUM (VI) (Cr <sup>6+</sup> )	0.1% (1000 mg/kg)
POLYBROMINATED BIPHENYLS (PBBs)	0.1% (1000 mg/kg)
POLYBROMINATED DIPHENYL ETHERS (PBDEs)	0.1% (1000 mg/kg)

THE ABOVE LIMITS WERE QUOTED FROM 2002/95/EC AND AMENDMENT 2005/618/EC FOR HOMOGENEOUS MATERIAL.

(C) TEST METHOD:

<u>TESTING ITEM</u>	<u>TESTING METHOD</u>	<u>LIMIT OF QUANTIFICATION</u>
CADMIUM (Cd) CONTENT	WITH REFERENCE TO USEPA 3052:1996, BY ACID DIGESTION AND DETERMINED BY ICP-OES	2 mg/kg
LEAD (Pb) CONTENT	WITH REFERENCE TO USEPA 3052:1996, BY ACID DIGESTION AND DETERMINED BY ICP-OES	2 mg/kg
MERCURY (Hg) CONTENT	WITH REFERENCE TO USEPA 3052:1996, BY ACID DIGESTION AND DETERMINED BY ICP-OES	2 mg/kg
CHROMIUM VI (Cr <sup>6+</sup> ) CONTENT	WITH REFERENCE TO USEPA 3060A:1996 & 7196A:1992, BY ALKALINE DIGESTION AND DETERMINED BY UV-VIS	1 mg/kg
POLYBROMINATED BIPHENYLS (PBBs) & POLYBROMINATED DIPHENYL ETHERS (PBDEs)	WITH REFERENCE TO USEPA 3540C:1996, BY SOLVENT EXTRACTION AND DETERMINED BY GC/MS AND FURTHER HPLC CONFIRMATION WHEN NECESSARY	5 mg/kg

REMARK : REPORTING LIMIT = QUANTITATION LIMIT OF ANALYTE IN SAMPLE

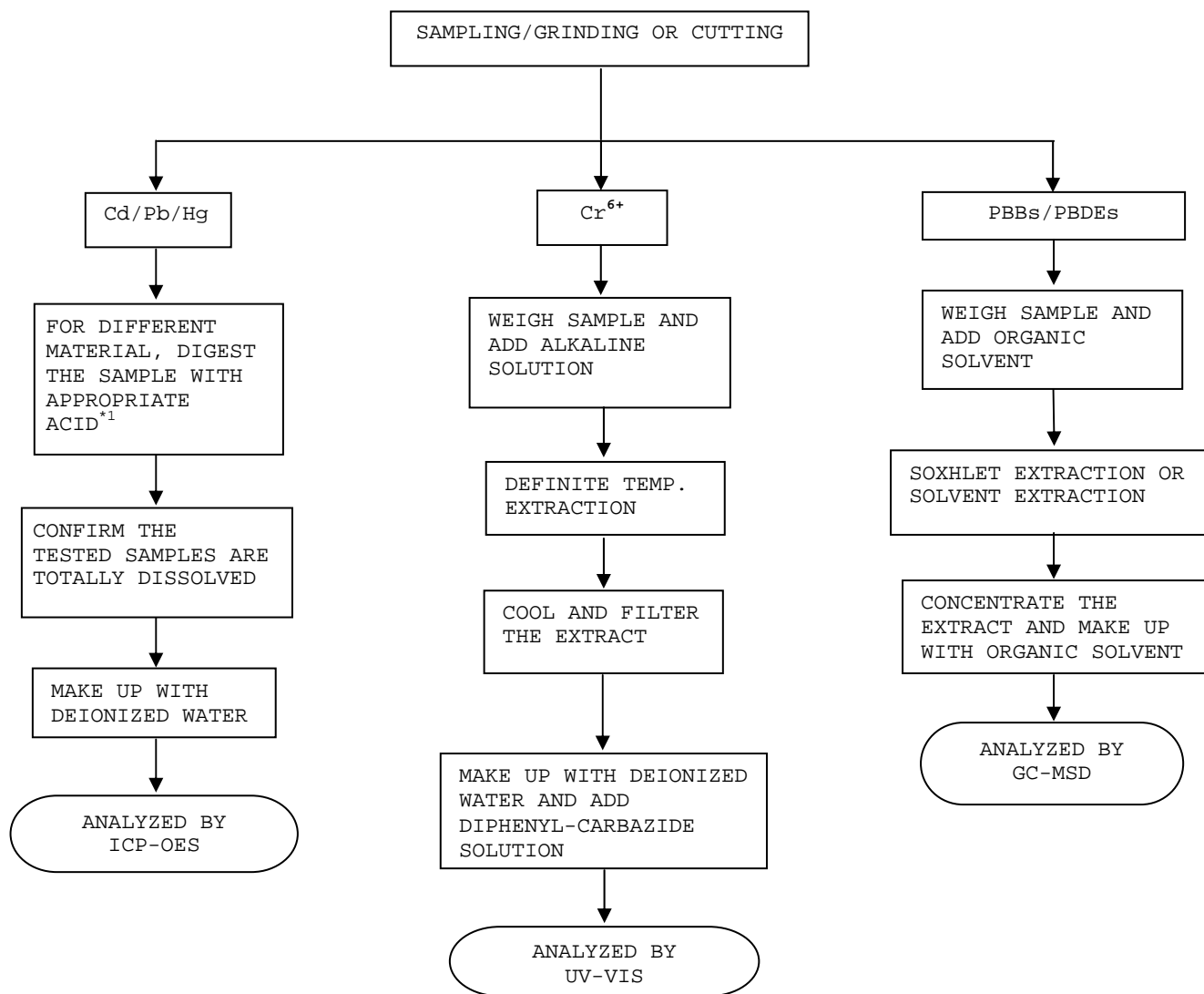
\*\*\*\*\*

**TEST REPORT**

NUMBER : BKKH09033928S1

(D) MEASUREMENT FLOWCHART

TEST FOR Cd/Pb/Hg/CHROMIUM (VI)/PBBS/PBDES CONTENTS



REMARKS :

\*1: LIST OF APPROPRIATE ACID:

MATERIAL	ACID ADDED FOR DIGESTION
POLYMERS	HNO <sub>3</sub> , HCl, H <sub>2</sub> O <sub>2</sub>

\*\*\*\*\* E N D \*\*\*\*\* /PK/SUT/KS